



THERA-PAW BOOTS SIZING CHART

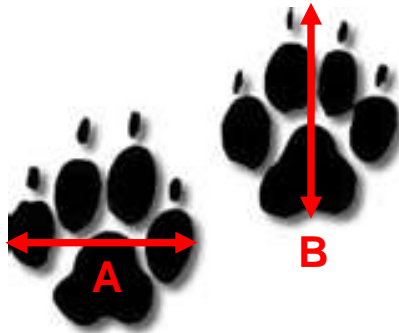
Thera-Paw boots are designed to provide a snug fit throughout the paw and wrist or ankle. Please follow the sizing instructions below to determine the best fit for your dog.

Keep in mind that we can modify our Thera-Paw boots if needed, to provide a custom fit for your dog.

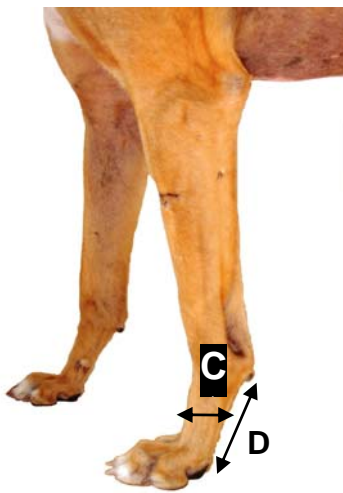
Measurement	A	B	C	D	Fits most dogs weighing ON AVERAGE lbs
Thera-Paw Boot SIZE <i>aka</i>	Paw Width <i>inches</i>	Paw Length <i>inches</i>	Wrist/Ankle Circumference <i>inches</i>	Wrist/Ankle Height <i>inches</i>	
T/B S <i>small</i>	2	2 1/2	up to 3	2	15 to 35
T/C S/M <i>small/medium</i>	2 1/4	2 3/4	up to 3 1/2	2 1/2	30 to 50
T/D S/M2 <i>small/medium2</i>	2 1/2	3	up to 4	2 1/2	40 to 70
T/E M <i>medium</i>	2 3/4	3 1/2	up to 4 1/2	2 3/4	60 to 90
T/F M/L <i>medium/large</i>	3	3 3/4	up to 5	3 1/2	80 to 110
T/G L <i>large</i>	3 1/2	4 1/4	up to 6	4	100 to 130

Directions

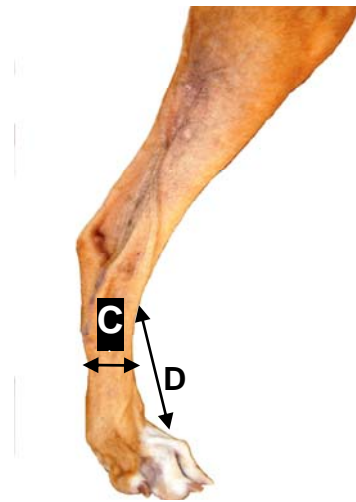
1. Place a piece of paper on a hard floor surface.
2. Have your dog stand and bear weight with the affected paw on the piece of paper.
3. Trace around the outline of the paw, keeping the pen vertical and in continuous contact with the paw.



4. Determine the **Paw Width (A)** by measuring the paw tracing at its widest point.
5. Determine the **Paw Length (B)** by measuring the paw tracing at its longest point to the tip of the nails.



FRONT LEG



BACK LEG

6. Determine the **Wrist/Ankle Circumference (C)** by measuring the circumference at the midpoint of the wrist or ankle.

7. Determine the **Wrist/Ankle Height (D)** by:
 - a. Measuring the height from the back of the main footpad to the base of the carpal pad (**Front Leg**).
 - b. Measuring the height from the top of the paw to the ankle joint (**Back Leg**).
8. Compare your measurements with those on the sizing chart to determine the correct Thera-Paw size for your dog.

Helpful Hints and Other Useful Information

1. If your dog has “high” knuckles and toes, please add ¼” inch to your **Paw Width** measurement.
2. If your dog is nervous about bearing weight on the piece of paper, lift his/her other paw off the ground.
3. If your dog is not able to bear weight on the affected paw because of pain or a wound, measure the same paw (**Front** or **Back**) on the opposite side AS LONG AS that paw is similar in size and shape.
4. If the affected paw is abnormally shaped in any way (e.g., toe amputation, digital deformities) please consult with us before purchasing the Thera-Paw boot.

Thera-Paw Boot Custom Modifications

1. Custom modifications can be made for an additional charge (see the “Buy Thera-Paw” page).
2. Determine the correct Thera-Paw size using the **Paw Width (A)** and **Length (B)** measurements. Then, measure your dog’s **Wrist/Ankle Circumference (C)** and **Height (D)**.
3. If your dog’s **Wrist/Ankle Circumference (C)** is WIDER (your measurement is greater) than the determined paw size, then the Thera-Paw boot cuff needs to be widened [we widen the cuff of the boot by adding more neoprene (stretchy material) to the cuff].

4. If your dog's [Wrist/Ankle Height \(D\)](#) is SHORTER (your measurement is less) than the determined paw size, then the Thera-Paw boot cuff needs to be cut down.
5. Most custom modifications can be done in 1-3 business days. Please account for this additional time before placing your order.
6. Other modifications are also possible, such as narrowing the paw width. Please contact us for more information on modifications (908-439-9139; orders@therapaw.com).